

Courtesy Of Raj Bhatia Of PREP Realty

## **\$565,000 - 3914 Claxton Loop Sw, Edmonton**

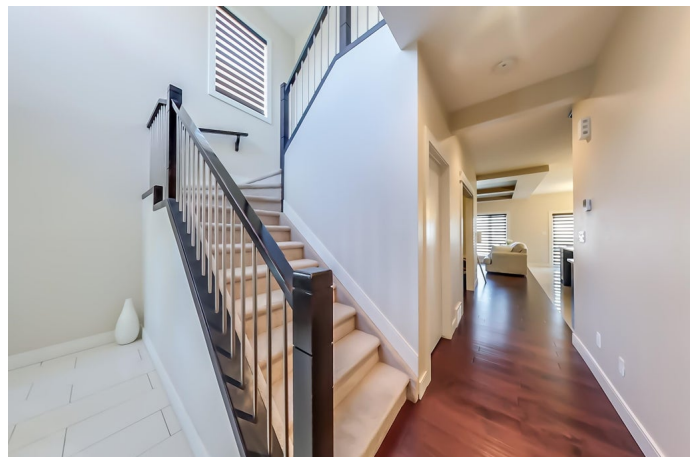
MLS® #E4266341

### **\$565,000**

4 Bedroom, 4.00 Bathroom, 2,051 sqft  
Single Family on 0.10 Acres

Chappelle Area, Edmonton, AB

2015 Upgraded Stunning home in Heart of Chapelle in SW Edmonton. With 2050 Sq Ft this Spacious property offers 4 large size Bedrooms 2.5 baths. Open Concept Main Level with 18 Ft High Ceilings at the entrance foyer with Huge Den/Office room on main level. Spacious Living room with coffered ceiling and large windows. Kitchen offers a Huge Island with high end quartz countertops with maple cabinets and walk-thru pantry. Spacious Dining Nook for regular size dining table. Custom Patio doors lead to great size deck and big backyard. Nice wide staircase with spindle railings takes you to the comfortable upper level with huge Bonus room with boxed windows. Large Size Primary Bedroom comes with spacious 5 Pc master suite w/full Jacuzzi ensuite & custom jet shower. 3 additional large bedrooms & another full bath. Stone exterior, crown molding & oversized double garage. The Unfinished basement comes with a Side Entrance. Walking distance to pond/trails, K-9 school & shopping! Very Close to Major Highways.



Built in 2015

### **Essential Information**

MLS® # E4266341

Price \$565,000

Bedrooms	4
Bathrooms	4.00
Full Baths	3
Half Baths	1
Square Footage	2,051
Acres	0.10
Year Built	2015
Type	Single Family
Sub-Type	Residential Detached Single Family
Style	2 Storey
Status	ACTIVE
Zone	Zone 55

### Community Information

Address	3914 Claxton Loop Sw
Area	Edmonton
Subdivision	Chappelle Area
City	Edmonton
County	ALBERTA
Province	AB
Postal Code	T6W 2B4

### Amenities

Features	Closet Organizers, Deck, Exterior Walls- 2x6'
Parking	Double Garage Attached, Insulated
# of Garages	2

### Interior

Interior	Carpet, Ceramic Tile, Hardwood
Interior Features	Dishwasher-Built-In, Dryer, Garage Control, Garage Opener, Microwave Hood Cover, Refridgerator - Energy Star, Washer - Energy Star, Window Coverings
Heating	Forced Air-1
Fireplace	Yes
Fireplaces	Gas, See Remarks, Corner, Glass Door, Stone Facing
# of Stories	2
Has Basement	Yes
Basement	Full, Unfinished

### Exterior

Exterior	Stone, Vinyl
Exterior Features	Airport Nearby, Fenced, Flat Site, Golf Nearby, Landscaped, Park/Reserve, Playground Nearby, Schools, Shopping Nearby, See Remarks
Roof	Asphalt Shingles
Construction	Wood Frame
Foundation	Concrete

### **School Information**

Elementary	Donny R Getty
Middle	Dr Lila Fahlman
High	Lillian Osborne

### **Additional Information**

Date Listed            October 12th, 2021

Data is deemed reliable but is not guaranteed accurate by the REALTORS® Association of Edmonton. Copyright 2021 by the REALTORS® Association of Edmonton. All rights reserved.

Listing information last updated on November 28th, 2021 at 1:31pm MST