

Courtesy Of Vincent Hiew Of Maximum Realty Inc.

\$58,900 - # 408 12831 66 Street Nw, Edmonton

MLS® #E4264422

\$58,900

1 Bedroom, 1.00 Bathroom, 546 sqft
Condo / Townhouse on 0.01 Acres

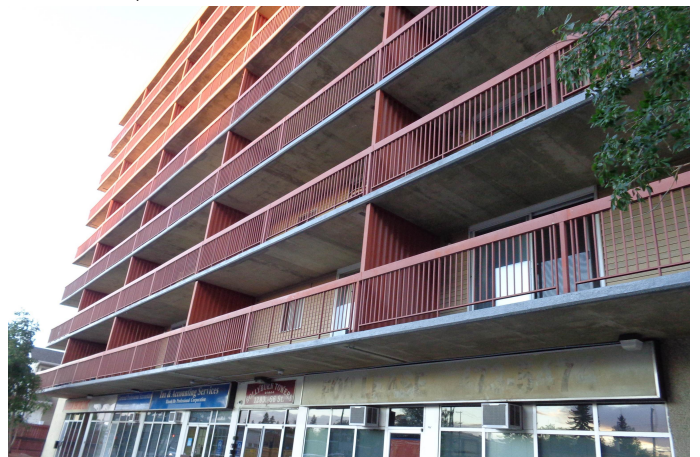
Belvedere, Edmonton, AB

"Cheaper than Rent!" Why pay rent if you can afford this 1 Bedroom Concrete High Rise? Located on the 4th floor, upgraded Full Bath with Tile Surround and Ceramic Tile Floor. Kitchen with Cabinets, Granite Counter Tops, nice Backsplash and Stainless Steel Appliances.* Huge east facing Balcony with storage.* This building is only minutes to YELLOWHEAD, Manning Freeway, downtown and walking distance to the LRT and Shopping.* "Move In Ready, Act Now!"

Built in 1983

Essential Information

MLS® #	E4264422
Price	\$58,900
Bedrooms	1
Bathrooms	1.00
Full Baths	1
Square Footage	546
Acres	0.01
Year Built	1983
Type	Condo / Townhouse
Sub-Type	Apartment High Rise
Style	Single Level Apartment
Status	ACTIVE
Condo Name	Hollyburn Towers
Zone	Zone 02



Community Information

Address	# 408 12831 66 Street Nw
Area	Edmonton
Subdivision	Belvedere
City	Edmonton
County	ALBERTA
Province	AB
Postal Code	T5C 0A4

Amenities

Features	Laundry-Coin-Op, Laundry-Same Floor, No Animal Home, No Smoking Home, Parking-Visitor, Security Door, Storage-In-Suite
Parking	Stall, Underground, See Remarks

Interior

Interior	Ceramic Tile, Laminate Flooring
Interior Features	Dishwasher-Built-In, Refrigerator, Stove-Electric
Heating	Baseboard, Hot Water
# of Stories	1
Basement	None, No Basement

Exterior

Exterior	Brick, Stucco
Exterior Features	Back Lane, Playground Nearby, Public Transportation, Schools, Shopping Nearby
Roof	Tar & Gravel
Construction	Wood Frame
Foundation	Concrete

Additional Information

Date Listed	September 27th, 2021
Condo Fee	\$580

Data is deemed reliable but is not guaranteed accurate by the REALTORS® Association of Edmonton. Copyright 2021 by the REALTORS® Association of Edmonton. All rights reserved.

Listing information last updated on November 28th, 2021 at 1:31pm MST