

Courtesy Of Amy Schmidt Of RE/MAX Professionals

\$530,000 - 52 Kingsbury Circle, Spruce Grove

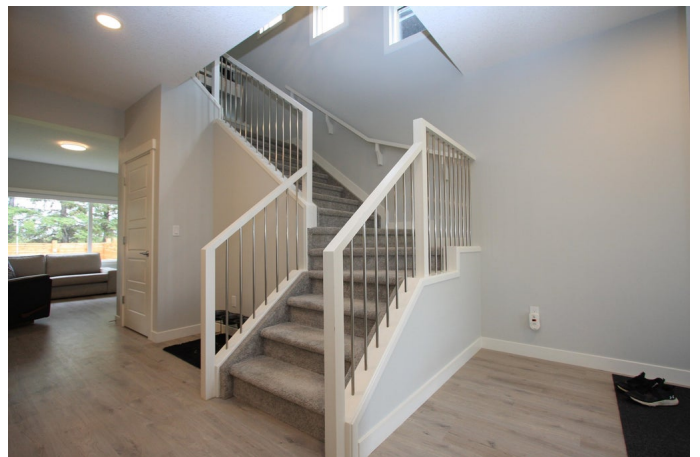
MLS® #E4262433

\$530,000

3 Bedroom, 3.00 Bathroom, 2,024 sqft
Single Family on 0.10 Acres

Kenton, Spruce Grove, AB

Curb appeal and an immaculate interior you will fall in love with! This spacious, open concept home is not only stylish but offers a functional floor plan. A large bright kitchen with a huge island, quartz countertops, plenty of storage and upgraded appliances including dual fuel stove (gas/electric) a large dining area and living room, the main floor will surely be a popular hangout spot for family and guests. The walk-through mudroom is a perfect drop spot for after school and will help keep your family organized. Attached double garage has 11' ceilings with potential for ample overhead storage and is large enough for your truck! The upstairs bonus room is full of natural light and just around the corner are 2 bedrooms and a 4 pc bath. Down the hall beyond the laundry room is the primary bedroom with an amazing 5 pc ensuite. The basement is roughed in for a bathroom and is ready for your finishing touch. Recently landscaped, fenced and upgraded with central AC, gas BBQ hookup, shows 10/10.



Built in 2020

Essential Information

MLS® #	E4262433
Price	\$530,000
Bedrooms	3

Bathrooms	3.00
Full Baths	2
Half Baths	1
Square Footage	2,024
Acres	0.10
Year Built	2020
Type	Single Family
Sub-Type	Residential Detached Single Family
Style	2 Storey
Status	ACTIVE
Zone	Zone 91

Community Information

Address	52 Kingsbury Circle
Area	Spruce Grove
Subdivision	Kenton
City	Spruce Grove
County	ALBERTA
Province	AB
Postal Code	T7X 0C9

Amenities

Features	Air Conditioner, Ceiling 9 ft., Deck, No Smoking Home, See Remarks, HRV System
Parking Spaces	4
Parking	Double Garage Attached, Front Drive Access
# of Garages	2

Interior

Interior	Carpet, Ceramic Tile, Vinyl Plank
Interior Features	Dishwasher-Built-In, Dryer, Garage Control, Garage Opener, Hood Fan, Oven-Microwave, Refrigerator, Washer, Window Coverings, Stove-Gas, TV Wall Mount, Air Conditioning-Central
Heating	Forced Air-1
Fireplace	Yes
Fireplaces	Electric, Insert
# of Stories	2
Has Basement	Yes
Basement	Full, Unfinished

Exterior

Exterior	Stone, Vinyl
Exterior Features	Backs Onto Park/Trees, Fenced, Flat Site, Landscaped, Schools, Shopping Nearby
Roof	Asphalt Shingles
Construction	Wood Frame
Foundation	Concrete

School Information

Elementary	Prescott/St Marguerite
Middle	Prescott/St Thomas
High	SGCHS/St Peter

Additional Information

Date Listed September 11th, 2021

Data is deemed reliable but is not guaranteed accurate by the REALTORS® Association of Edmonton. Copyright 2021 by the REALTORS® Association of Edmonton. All rights reserved.

Listing information last updated on October 16th, 2021 at 5:16pm MDT