

\$559,900 - 12336 20 Avenue Sw Sw, Edmonton

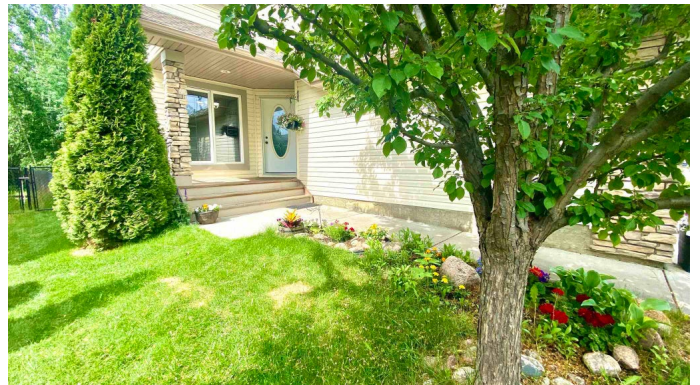
MLS® #E4249011

\$559,900

5 Bedroom, 4.00 Bathroom, 2,209 sqft
Single Family on 0.11 Acres

Rutherford, Edmonton, AB

This beautiful 2,200+ sq. ft. fully finished 5 bedrooms (3+2) family home backs onto a beautiful park with pond and is just a few blocks from the new Johnny Bright school. The main floor boasts a spacious open plan with large living room with gas fireplace, big eating area opening onto the deck overlooking the park, and stylish kitchen with raised eating bar. There is also a formal dining room and main floor laundry with custom cabinetry and access to the garage. Upstairs you will find three generous bedrooms, including the large master bedroom with walk-in closet and luxurious ensuite with corner soaker tub. The huge bonus room with vaulted ceiling on this level is perfect for comfy family time. The basement is fully finished with two bedrooms, one three-piece bathroom and lots of open family space with gas fireplace. This home is fully and beautifully finished with hardwood, tile and carpet. Appliances are included; all that is missing is you, so let's get moving!



Built in 2006

Essential Information

MLS® #	E4249011
Price	\$559,900
Bedrooms	5
Bathrooms	4.00

Full Baths	3
Half Baths	1
Square Footage	2,209
Acres	0.11
Year Built	2006
Type	Single Family
Sub-Type	Residential Detached Single Family
Style	2 Storey
Status	ACTIVE
Zone	Zone 55

Community Information

Address	12336 20 Avenue Sw Sw
Area	Edmonton
Subdivision	Rutherford
City	Edmonton
County	ALBERTA
State	AB
Zip Code	T6W 1Y1

Amenities

Features	Ceiling 9 ft., Deck, Detectors Smoke
Parking Spaces	4
Parking	Double Garage Attached
# of Garages	2

Interior

Interior	Carpet, Ceramic Tile, Hardwood
Interior Features	Air Conditioning-Central, Dishwasher-Built-In, Dryer, Garage Opener, Hood Fan, Refrigerator, Stove-Electric, Washer, Garage Control
Heating	Forced Air-1
Fireplace	Yes
Fireplaces	Gas, Tile Surround
# of Stories	3
Has Basement	Yes
Basement	Full, Fully Finished

Exterior

Exterior	Stone, Vinyl
----------	--------------

Exterior Features	Fenced, Landscaped, Playground Nearby, Backs Onto Park/Trees, Public Transportation, Schools, Shopping Nearby
Roof	Asphalt Shingles
Construction	Wood Frame
Foundation	Concrete

School Information

Elementary	Johnny Bright School
Middle	S Bruce Smith School
High	Harry Ainley School

Additional Information

Date Listed	June 10th, 2021
HOA Fees	100.00
HOA Fees Freq.	Annually

Data is deemed reliable but is not guaranteed accurate by the REALTORS® Association of Edmonton. Copyright 2021 by the REALTORS® Association of Edmonton. All rights reserved.

Listing information last updated on June 19th, 2021 at 9:46pm MDT