

Courtesy Of Kerri-lyn Holland Of RE/MAX River City

\$1,495,000 - 14032 106a Avenue Nw, Edmonton

MLS® #E4248877

\$1,495,000

5 Bedroom, 4.00 Bathroom, 2,799 sqft
Single Family on 0.17 Acres

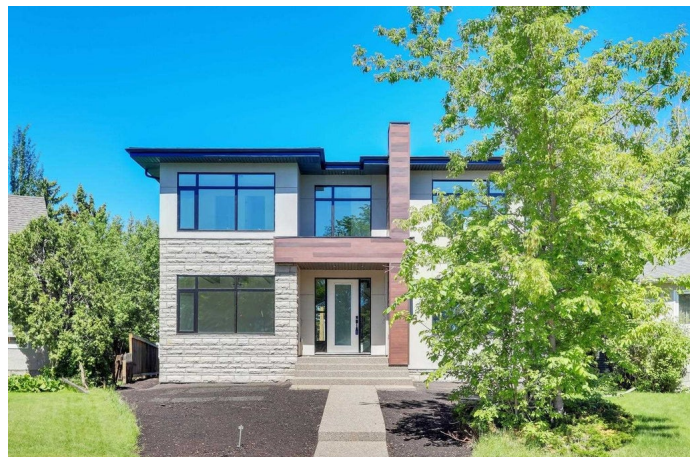
Glenora, Edmonton, AB

Modern design blended with traditional warmth! Located in Glenora â€“ FACING A PARK! This NEW 2 storey home has 5 bedrooms, 3.5 bathrooms - 4218 square feet of open concept living space including the finished basement & a TRIPLE detached garage, all on a 7523 square foot PIE SHAPED landscaped lot! Enter the home through the spacious foyer, to your left is your home office & to the right is the elegant dining room. From here continue into the chefs dream kitchen â€“ large island, dining area, beautiful cabinetry, storage & with a walk through the butler pantry connected to the formal dining. The kitchen is open to the living room, where your family will love relaxing by the fireplace â€“ the boot room & powder room completes this level. Upstairs, retreat to the master suite with a large walk-in closet, a hotel spa inspired ensuite. Bedrooms #2 & #3 features a Jack&Jill ensuite, & a laundry room completes the upper level! Downstairs you will find, a large family room, 4th& 5th beds & jack&jill ensuite bath.

Built in 2019

Essential Information

MLS® #	E4248877
Price	\$1,495,000



Bedrooms	5
Bathrooms	4.00
Full Baths	3
Half Baths	1
Square Footage	2,799
Acres	0.17
Year Built	2019
Type	Single Family
Sub-Type	Residential Detached Single Family
Style	2 Storey
Status	ACTIVE
Zone	Zone 11

Community Information

Address	14032 106a Avenue Nw
Area	Edmonton
Subdivision	Glenora
City	Edmonton
County	ALBERTA
Province	AB
Postal Code	T6N 1E1

Amenities

Features	Ceiling 9 ft., Deck, Detectors Smoke, Vinyl Windows, Infill Property
Parking Spaces	6
Parking	Triple Garage Detached
# of Garages	3
Garages	10.0x6.92

Interior

Interior	Carpet, Ceramic Tile, Hardwood
Interior Features	Dishwasher-Built-In, Dryer, Garage Control, Garage Opener, Refrigerator, Stove-Electric, Washer
Heating	Forced Air-1
Fireplace	Yes
Fireplaces	Electric, Insert
# of Stories	3
Has Basement	Yes
Basement	Full, Fully Finished

Exterior

Exterior	Stone, Fiber Cement Siding
Exterior Features	Back Lane, Fenced, Flat Site, Landscaped, Low Maintenance Landscape, Park/Reserve, Playground Nearby, Public Transportation, Schools, Shopping Nearby, Treed Lot, Cul-De-Sac
Roof	Asphalt Shingles
Construction	Wood Frame
Foundation	Concrete

School Information

Elementary	Glenora School
Middle	Westminster School
High	Ross Sheppard School

Additional Information

Date Listed June 10th, 2021

Data is deemed reliable but is not guaranteed accurate by the REALTORS® Association of Edmonton. Copyright 2021 by the REALTORS® Association of Edmonton. All rights reserved.
Listing information last updated on August 5th, 2021 at 1:01am MDT