

Courtesy Of Jolene Langelles Of RE/MAX Elite

\$269,900 - # 86 4029 Orchards Drive Sw, Edmonton

MLS® #E4241913

\$269,900

3 Bedroom, 3.00 Bathroom, 1,113 sqft
Condo / Townhouse on 0.04 Acres

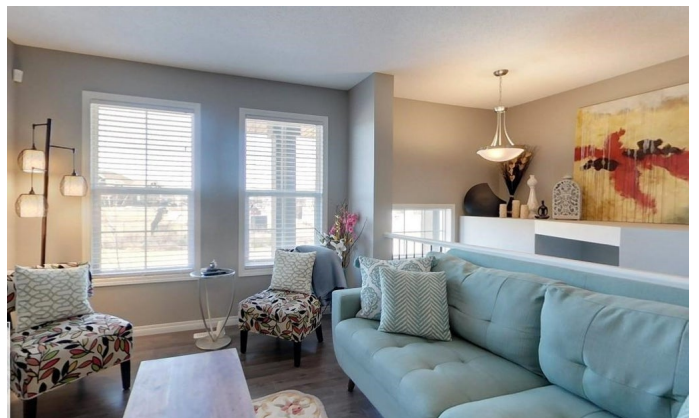
Orchards At Ellerslie The, Edmonton, AB

Park view! Enjoy looking out at the green space and the privacy of sitting outside with no neighbours in front! This bright & sunny 3 bedroom, 2.5 bath townhouse is awesome - double attached garage, huge chef's kitchen with I-shaped island for entertaining, room for both a kitchen and dining table, beautiful granite countertops and quality laminate flooring. Plus upgraded underlay under the carpets to keep them looking just like new! Plenty of useable space that can be finished in the basement, a fenced front yard for pets, and who doesn't love maintenance free! Your low condo fees of \$221/month take care of everything so you don't have to - no more grass cutting or snow shovelling - PERFECT for 1st time buyers, and busy families. Located in popular Orchards of Ellerslie, with walking access to the community skating rink, community gardens, party rooms, picnic area, basketball courts, fitness classes, plus South Edmonton Common, Anthony Henday, schools - this neighbourhood has it all!

Built in 2015

Essential Information

MLS® #	E4241913
Price	\$269,900
Bedrooms	3



Bathrooms	3.00
Full Baths	2
Half Baths	1
Square Footage	1,113
Acres	0.04
Year Built	2015
Type	Condo / Townhouse
Sub-Type	Townhouse
Style	2 Storey
Status	ACTIVE
Condo Name	Grove Townhomes The
Zone	Zone 53

Community Information

Address	# 86 4029 Orchards Drive Sw
Area	Edmonton
Subdivision	Orchards At Ellerslie The
City	Edmonton
County	ALBERTA
State	AB
Zip Code	T6X 1V2

Amenities

Features	Ceiling 9 ft., Vinyl Windows, Parking-Visitor
Parking Spaces	2
Parking	Double Garage Attached
# of Garages	2

Interior

Interior	Ceramic Tile, Carpet, Laminate Flooring
Interior Features	Dishwasher-Built-In, Dryer, Garage Control, Garage Opener, Refrigerator, Stove-Electric, Washer, Window Coverings, Microwave Hood Cover
Heating	Forced Air-1
# of Stories	2
Has Basement	Yes
Basement	Unfinished, Part

Exterior

Exterior	Stone, Vinyl
Exterior Features	Fenced, Golf Nearby, Low Maintenance Landscape, Playground Nearby, Public Transportation, Schools, Shopping Nearby, Airport Nearby, Backs Onto Park/Trees, Landscaped, Picnic Area, Private Setting
Roof	Asphalt Shingles
Construction	Wood Frame
Foundation	Concrete

School Information

Elementary	Jan Reimer
Middle	Michael Strembitsky
High	Michael Strembitsky

Additional Information

Date Listed	May 3rd, 2021
HOA Fees	400.00
HOA Fees Freq.	Annually
Condo Fee	\$221

Data is deemed reliable but is not guaranteed accurate by the REALTORS® Association of Edmonton. Copyright 2021 by the REALTORS® Association of Edmonton. All rights reserved.
Listing information last updated on May 6th, 2021 at 6:31pm MDT