

\$149,900 - 30,-2032 Hwy 622, Telfordville

MLS® #E4241912

\$149,900

2 Bedroom, 1.00 Bathroom, 980 sqft
Single Family on 0.00 Acres

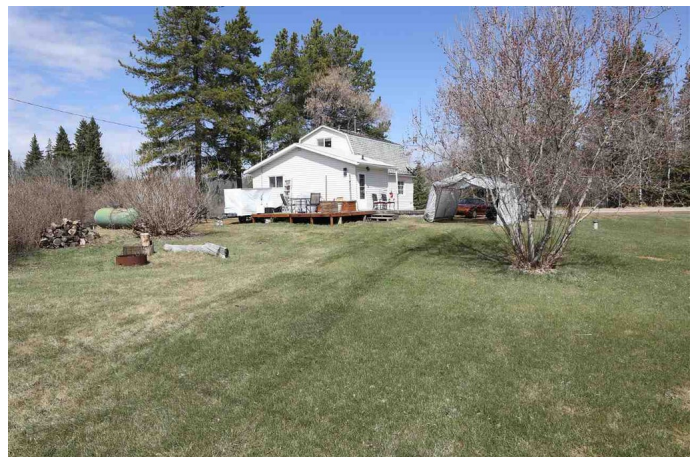
Telfordville, Telfordville, AB

This 1950 1 ½ storey home with addition built in 2007 is located in the peaceful Hamlet of Telfordville. 980 sq. ft. The main level features the master bedroom, laundry area, four piece bathroom, country size kitchen and large living room. The upper level has the second bedroom and den/loft area. Lot size is .85 acres. 100 amp service. Services include drilled well in 2007, septic tank & field, power, propane, phone, internet & satellite TV. Zoned rural centre mixed. Located on pavement. Creek nearby. Easy commute to Leduc.

Built in 1950

Essential Information

MLS® #	E4241912
Price	\$149,900
Bedrooms	2
Bathrooms	1.00
Full Baths	1
Square Footage	980
Acres	0.00
Year Built	1950
Type	Single Family
Sub-Type	Residential Detached Single Family
Style	1 and Half Storey
Status	ACTIVE
Zone	Zone 90



Community Information

Address	30,-2032 Hwy 622
Area	Telfordville
Subdivision	Telfordville
City	Telfordville
County	ALBERTA
State	AB
Zip Code	T0C 2P0

Amenities

Features	Deck
Parking	Off Street

Interior

Interior	Laminate Flooring, Non-Ceramic Tile
Interior Features	Dryer, Refrigerator, Storage Shed, Stove-Electric, Washer
Heating	Forced Air-1
Fireplace	Yes
Fireplaces	Wood, Freestanding
# of Stories	2
Has Basement	Yes
Basement	Part, Unfinished

Exterior

Exterior	Vinyl
Exterior Features	Landscaped, See Remarks
Roof	Asphalt Shingles
Construction	Wood Frame
Foundation	Concrete

Additional Information

Date Listed	May 3rd, 2021
-------------	---------------

Data is deemed reliable but is not guaranteed accurate by the REALTORS® Association of Edmonton. Copyright 2021 by the REALTORS® Association of Edmonton. All rights reserved.
Listing information last updated on May 6th, 2021 at 8:01pm MDT