

Courtesy Of Ann Dawrant Of RE/MAX Elite

## **\$948,888 - 267 Tory Crescent Nw, Edmonton**

MLS® #E4235977

### **\$948,888**

5 Bedroom, 8.00 Bathroom, 4,467 sqft  
Single Family on 0.20 Acres

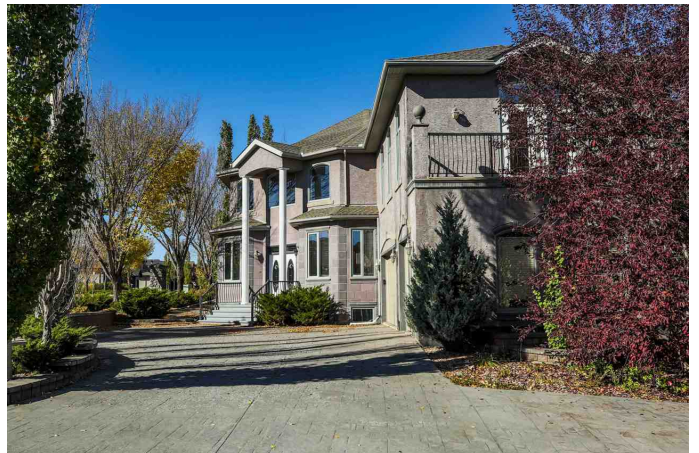
Terwillegar Towne, Edmonton, AB

Welcome to your new home! This huge mansion will be your future home, office, gym & entertainment center for many years to come. The MAIN FLOOR BEDROOM & 4 pce bath are ideal for an extended family member. The two flex rooms could either be home offices/dining room/cozy living room or music room. Large kitchen with maple cabinets, granite counters, slate tiles, family size dining area & huge adjoining walk-in pantry. The upstairs has 2 large bedrooms each with 4 pce ensuite & walk-in closets. The expansive loft/open area lends itself beautifully as an exercise/yoga retreat. MASSIVE BONUS ROOM over the THREE CAR GARAGE where you can enjoy fun times with close family & friends. The basement is fully finished with a spacious recreation room, wet bar, 2 bedrooms, 2 full bathrooms & plenty of storage. Fantastic location in this prestigious neighbourhood just steps to a large park, close to schools, transit, shopping & Terwillegar Rec Centre. The perfect home for an active family. Move in & enjoy!

Built in 2003

### **Essential Information**

MLS® #	E4235977
Price	\$948,888



Bedrooms	5
Bathrooms	8.00
Full Baths	5
Half Baths	3
Square Footage	4,467
Acres	0.20
Year Built	2003
Type	Single Family
Sub-Type	Residential Detached Single Family
Style	2 Storey
Status	ACTIVE
Zone	Zone 14

### **Community Information**

Address	267 Tory Crescent Nw
Area	Edmonton
Subdivision	Terwillegar Towne
City	Edmonton
County	ALBERTA
State	AB
Zip Code	T6R 3A5

### **Amenities**

Features	Air Conditioner, Ceiling 9 ft., Deck, Detectors Smoke, No Smoking Home, Vinyl Windows
Parking Spaces	6
Parking	Front Drive Access, Insulated, Triple Garage Attached
# of Garages	3
Garages	9.59x6.39

### **Interior**

Interior	Hardwood, Linoleum, Wall to Wall Carpet
Interior Features	Air Conditioning-Central, Alarm/Security System, Dishwasher-Built-In, Dryer, Fan-Ceiling, Garage Control, Garage Opener, Hood Fan, Stove-Electric, Vacuum System Attachments, Washer, Window Coverings, Refrigerators-Two
Heating	Forced Air-1, Forced Air-2
Fireplace	Yes
Fireplaces	Gas, Double Sided, Mantel

# of Stories	3
Has Basement	Yes
Basement	Full, Fully Finished

### **Exterior**

Exterior	Stucco
Exterior Features	Corner, Fenced, Flat Site, Landscaped, No Back Lane, Park/Reserve, Public Swimming Pool, Public Transportation, Shopping Nearby
Roof	Asphalt Shingles
Construction	Wood Frame
Foundation	Concrete

### **School Information**

Elementary	E Starkman, Mons W Irwin
Middle	E Starkman, Mons W Irwin
High	Lillian Osborne, Mo M Mary

### **Additional Information**

Date Listed	April 1st, 2021
HOA Fees	225.00
HOA Fees Freq.	Annually

Data is deemed reliable but is not guaranteed accurate by the REALTORS® Association of Edmonton. Copyright 2021 by the REALTORS® Association of Edmonton. All rights reserved.  
Listing information last updated on May 6th, 2021 at 7:46pm MDT