

Courtesy Of Scott Macmillan Of RE/MAX Elite

\$999,702 - 49026 Range Rd 232, Rural Leduc County

MLS® #E4230457

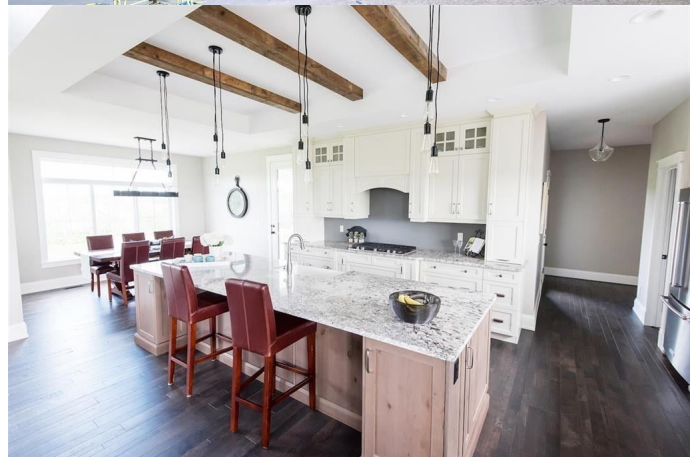
\$999,702

4 Bedroom, 4.00 Bathroom, 2,768 sqft
Rural on 19.99 Acres

None, Rural Leduc County, AB

THIS PLACE ISA 10+...20 ROLLING
ACRES...BIG HOUSE ON THE
PRAIRIES...CUSTOM BUILT
WALKOUT...SPECTACULAR DESIGN AND
ATTENTION TO DETAIL...TRUE COUNTRY
LIVING...NOT MISSING ANYTHING...

Absolutely stunning from the open beam
finish, to the floor to ceiling stone fireplace that
reaches all the way to the second level. The
chef's kitchen is amazing with granite
counters, contrasting light and dark cabinetry,
designer lighting (think Restoration Hardware),
gas cook top and high end appliance package.
Patio door access to a covered BBQ deck with
heater, from the adjacent dining nook. Upstairs
you have 2 kids rooms and the perfect jack
and jill bathroom setup. Flex room/bedroom
and the masters quarters are located on the
main level. The master comes with spa ensuite
including, multi head shower, soaker tub, dual
sinks and private balcony with view to nature.
Walkout level is fully finished with an extra
bedroom, huge rec with cozy gas fireplace and
state of the art mechanical; in-floor heat,
instant hot water etc.



Built in 2015

Essential Information

MLS® #	E4230457
Price	\$999,702

Bedrooms	4
Bathrooms	4.00
Full Baths	3
Half Baths	1
Square Footage	2,768
Acres	19.99
Year Built	2015
Type	Rural
Sub-Type	Residential Detached Single Family
Style	2 Storey
Status	ACTIVE
Zone	Zone 80

Community Information

Address	49026 Range Rd 232
Area	Rural Leduc County
Subdivision	None
City	Rural Leduc County
County	ALBERTA
State	AB
Zip Code	T0C 1Z0

Amenities

Features	Walkout Basement, See Remarks
Parking	Triple Garage Attached
# of Garages	3

Interior

Interior	Carpet, Ceramic Tile, Hardwood
Interior Features	Refrigerator, Garage Control, Garage Opener, Hood Fan, Oven-Built-In, Oven-Microwave, Stove-Countertop Gas
Heating	Forced Air-2
Fireplace	Yes
Fireplaces	Gas, Stone Facing
# of Stories	3
Has Basement	Yes
Basement	Full, Fully Finished, Walkout

Exterior

Exterior	Metal
Exterior Features	Private Setting
Roof	Metal
Construction	Wood Frame
Foundation	Concrete

Additional Information

Date Listed March 1st, 2021

Data is deemed reliable but is not guaranteed accurate by the REALTORS® Association of Edmonton. Copyright 2021 by the REALTORS® Association of Edmonton. All rights reserved.

Listing information last updated on May 6th, 2021 at 7:31pm MDT